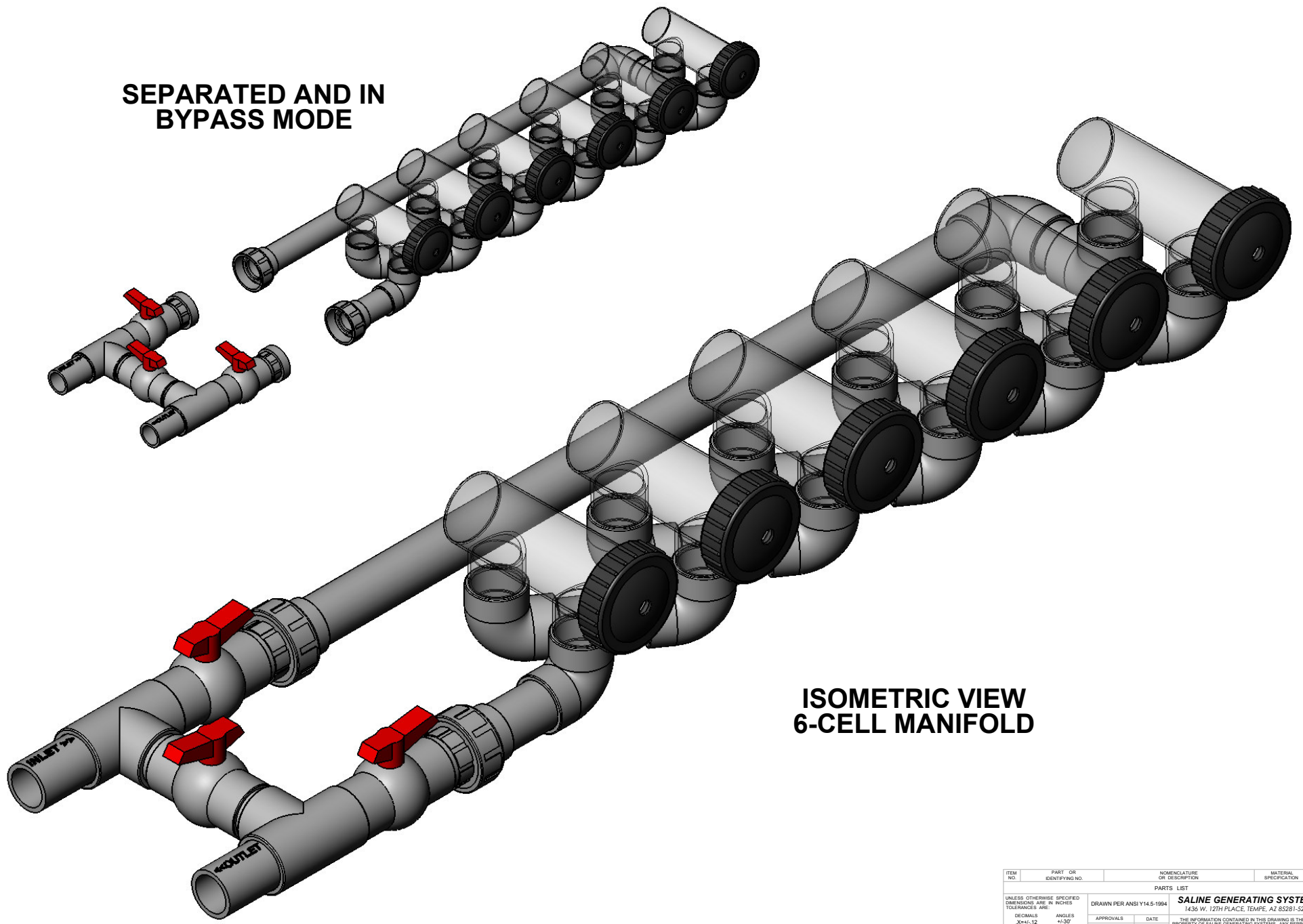


REV.		REVISIONS		DATE	APPROVED
A	ORIGINAL RELEASE			05/11/09	

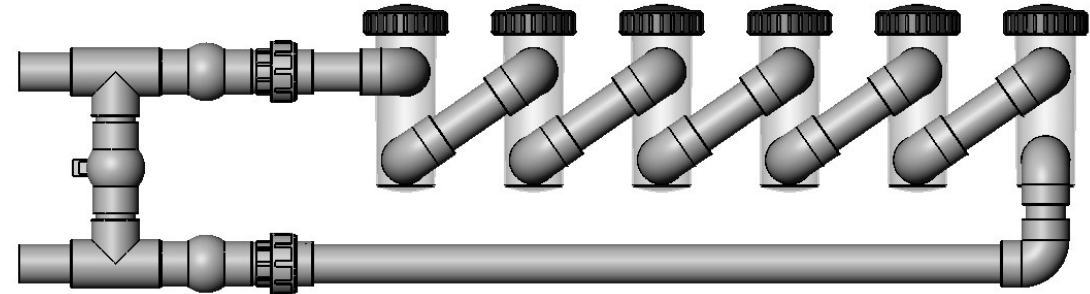
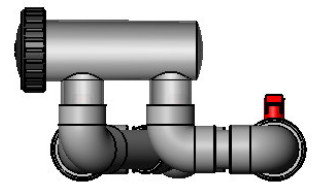
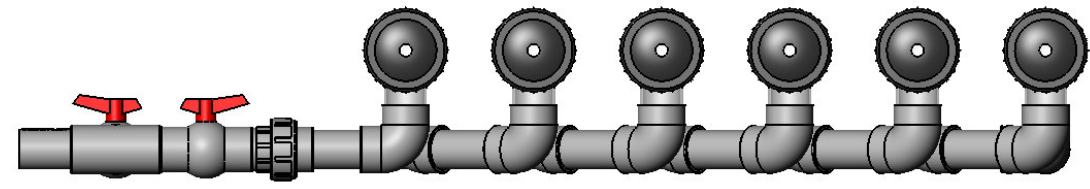
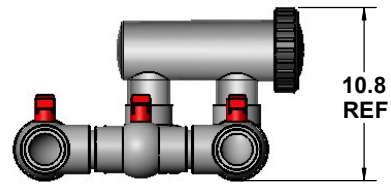
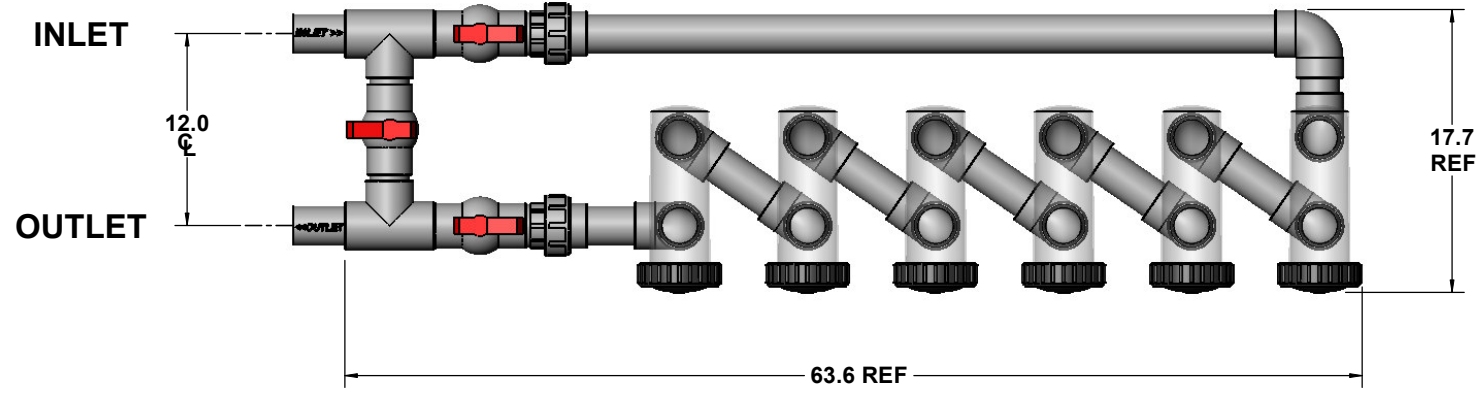
SEPARATED AND IN BYPASS MODE



**ISOMETRIC VIEW
6-CELL MANIFOLD**

ITEM NO.	PART OR IDENTIFYING NO.	NOMENCLATURE OR DESCRIPTION	MATERIAL SPECIFICATION	QTY	RECD
PARTS LIST					
UNLESS OTHERWISE SPECIFIED DIMENSIONS ARE IN INCHES TOLERANCES ARE:		SALINE GENERATING SYSTEMS 1436 W. 12TH PLACE, TEMPE, AZ 85281-5214			
DECIMALS	ANGLES	APPROVALS	DATE	<small>THE INFORMATION CONTAINED IN THIS DRAWING IS THE SOLE PROPERTY OF SALINE GENERATING SYSTEMS. ANY REPRODUCTION WITHOUT THE WRITTEN PERMISSION OF SGS IS PROHIBITED.</small> DRAWING NAME SIX CELL MANIFOLD	
.XX+/- .12	+/-30°	DRAWN	05/11/09		
.XXX+/- .05		CHECKED			
.XXX+/- .03		RESP ENG			
MATERIAL	--	MFG ENG		SIZE/DWG. NO. C	
FINISH	--	QUAL ENG			
DO NOT SCALE DRAWING		SCALE: 1/1" CAD FILE		SHEET 1 OF 3	

REV.		REVISIONS		DATE	APPROVED
A	ORIGINAL RELEASE			05/11/09	



ITEM NO.	PART OR IDENTIFYING NO.	NOMENCLATURE OR DESCRIPTION	MATERIAL SPECIFICATION	QTY	RECD
PARTS LIST					
UNLESS OTHERWISE SPECIFIED DIMENSIONS ARE IN INCHES TOLERANCES ARE:					
DECIMALS	ANGLES	DRAWN PER ANSI Y14.5-1994			
.XX+/-0.12	+/-30°	DRAWN BY K. ROPER			
.XXX+/-0.05		DATE 05/11/09			
.XXX+/-0.03		CHECKED			
MATERIAL	---	RESP. ENG.			
FINISH	---	MFG. ENG.			
DO NOT SCALE DRAWING	---	QUAL. ENG.			
		APPROVALS		DATE	
		SIGNATURE		05/11/09	
		TITLE			
		DRAWING NAME			
		DRAWING NO.			
		SCALE			
		C			
		1/1			
		CAD FILE			
		SHEET 2 OF 3			

SALINE GENERATING SYSTEMS
1436 W. 12TH PLACE, TEMPE, AZ 85281-5214

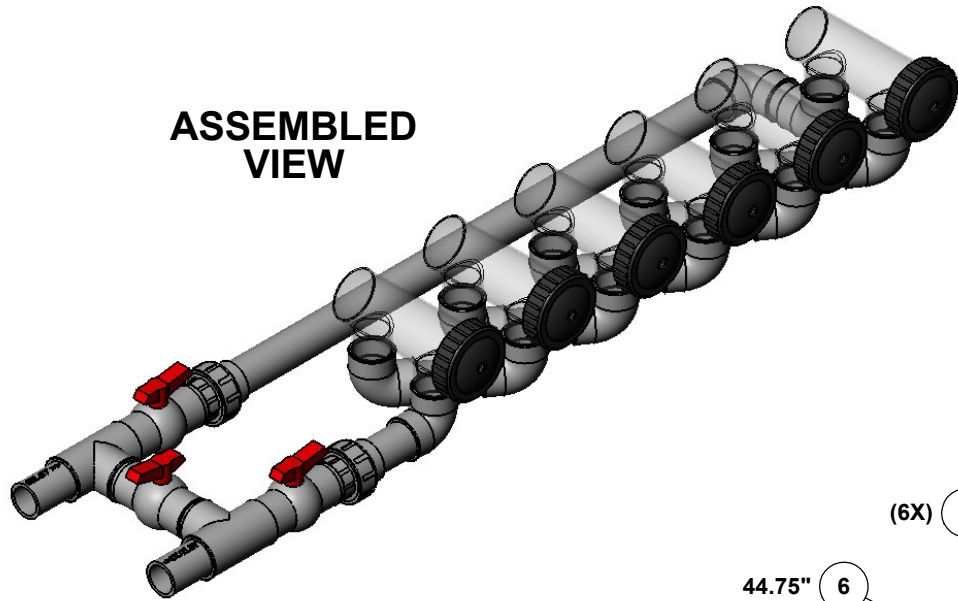
THE INFORMATION CONTAINED IN THIS DRAWING IS THE SOLE PROPERTY OF SALINE GENERATING SYSTEMS. ANY REPRODUCTION WITHOUT THE WRITTEN PERMISSION OF SGS IS PROHIBITED.

SIX CELL MANIFOLD

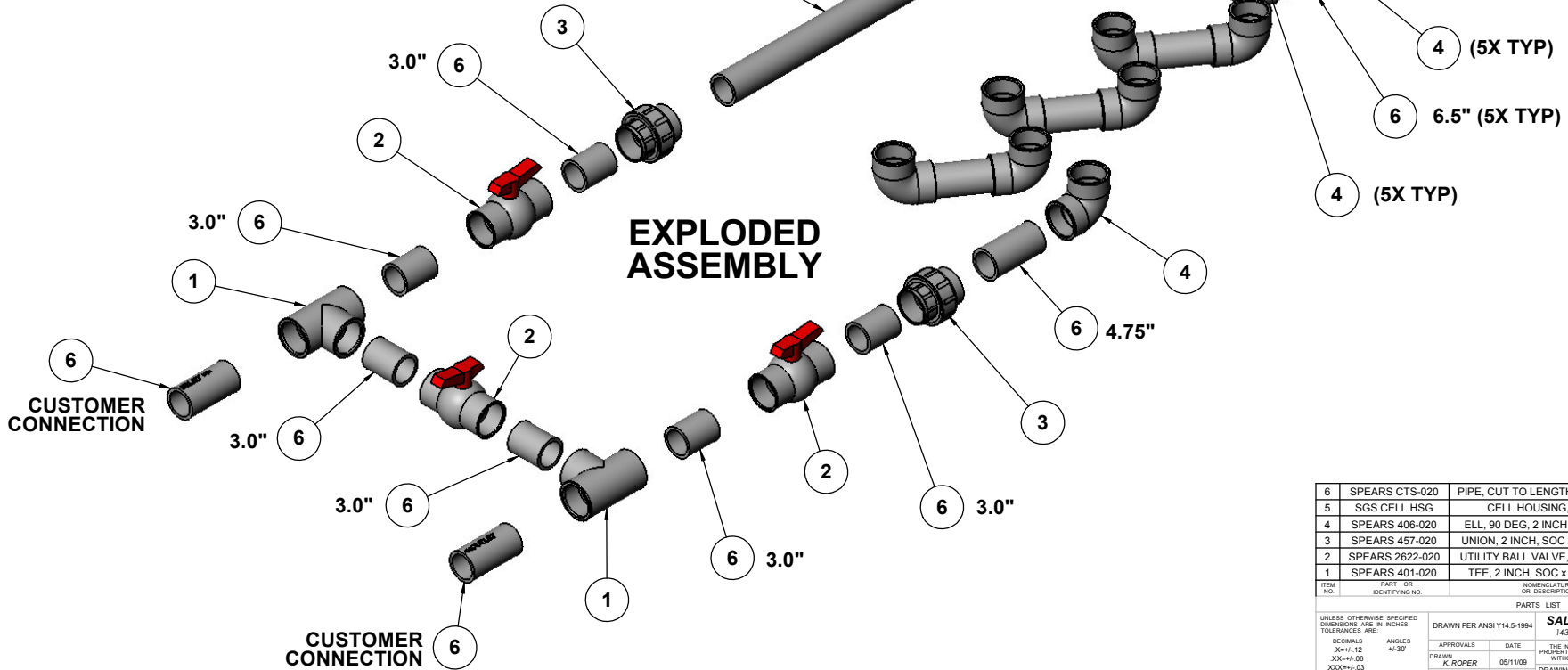
SGS DWG. NO. **SGS 6 CELL** REV. **A**

REV.		DESCRIPTION	DATE	APPROVED
A	ORIGINAL RELEASE		05/11/09	

ASSEMBLED VIEW



EXPLODED ASSEMBLY



ITEM NO.	PART OR IDENTIFYING NO.	NOMENCLATURE OR DESCRIPTION	MATERIAL SPECIFICATION	QTY REQD
6	SPEARS CTS-020	PIPE, CUT TO LENGTHS AS NOTED	SCH 40 PVC	AVR
5	SGS CELL HSG	CELL HOUSING, CLEAR	ACRYLIC	6
4	SPEARS 406-020	ELL, 90 DEG, 2 INCH, SOC x SOC	SCH 40 PVC	13
3	SPEARS 457-020	UNION, 2 INCH, SOC x SOC x SOC	SCH 40 PVC	2
2	SPEARS 2622-020	UTILITY BALL VALVE, 2 INCH, SOC	SCH 40 PVC	3
1	SPEARS 401-020	TEE, 2 INCH, SOC x SOC x SOC	SCH 40 PVC	2

PARTS LIST		APPROVALS		DATE	
DECIMALS	ANGLES	DRAWN	K. ADOPER	05/11/09	
XXX+/-1.12	+/-30'	CHECKED			
XXX+/-0.03		RESP ENG			
		MFG ENG			
		QUAL ENG			

UNLESS OTHERWISE SPECIFIED DIMENSIONS ARE IN INCHES TOLERANCES ARE:		DRAWN PER ANSI Y14.5-1994		SALINE GENERATING SYSTEMS 1436 W. 12TH PLACE, TEMPE, AZ 85281-5214	
THE INFORMATION CONTAINED IN THIS DRAWING IS THE SOLE PROPERTY OF SALINE GENERATING SYSTEMS. ANY REPRODUCTION WITHOUT THE WRITTEN PERMISSION OF SGS IS PROHIBITED.		APPROVALS DRAWN: K. ADOPER CHECKED: RESP ENG: MFG ENG: QUAL ENG:		DRAWING NAME SIX CELL MANIFOLD	
DO NOT SCALE DRAWING		SIZE: DWG. NO. C SCALE: 1/1" = 1" CAD FILE		REV. A SHEET 3 OF 3	